

DC Motor Diaphragm Pump

Model : DP0110 PWM

Cat.No. Lk046a



Brushless DC-Motor Pump (Dual Type)

DC brushless motor with
PWM facilitates flow-pressure control.

New

High Airflow

High Pressure

High Vacuum

Maintenance-free & Oilless



Specifications

	(SI)	(EURO)	(U.S.A.)
Free Air Displacement		7.5 L/min	0.26 cfm
Rated Voltage		12 V DC	
Maximum Pressure	0.15 MPa {1.5 kgf/cm ² }	1.5 bar	21.3 psig
Maximum Current		1.4 A	
Attainable Vacuum	-66.6kPa (-500mmHg)	-666 mbar	-19.7 in.Hg
Rated Operating Time		Continuous	
Life Expectancy		5,000 hours	
Control (PWM) ※1		2.5 - 5 V, 15 - 25 kHz, Duty cycle 80 - 100%	
Inlet and Outlet		6 mm O.D. straight nipple	
Coil Insulation Class		A or its equivalent (JTCL)	
Mounting Dimensions	50 mm(L) x 30 mm(W)		1- ³¹ / ₆₄ "(L) x 1- ³ / ₁₆ "(W)
Gross Weight	0.30 kg		0.66 Lbs.
Leadwire Length	180 mm		7"

※1: PWM= Pulse Width Modulation

PWM

Brushless DC-Motor Pump (Dual Type)

DC Motor Diaphragm Pump
Model : DP0110 PWM

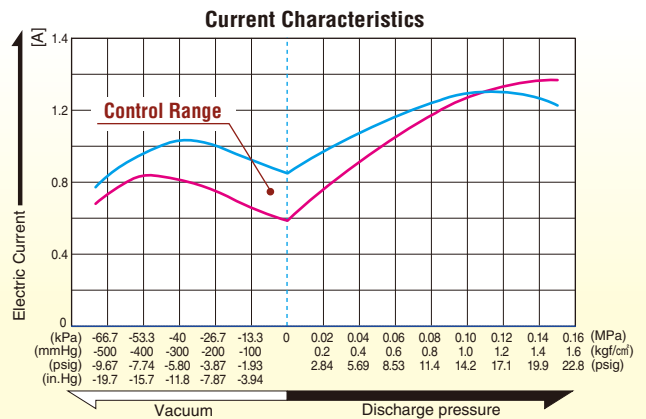
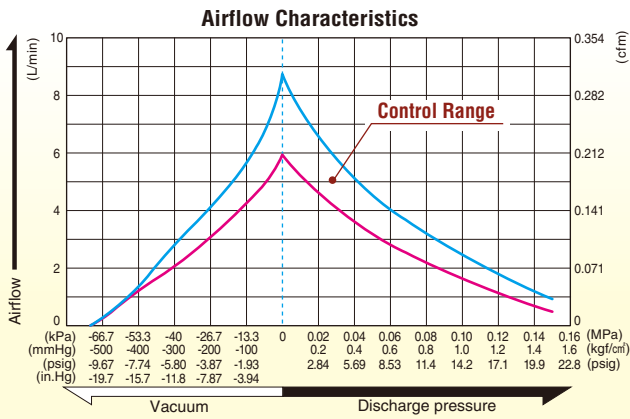
Applications

Compressed air and vacuum source for medical equipment, analyzer, etc.

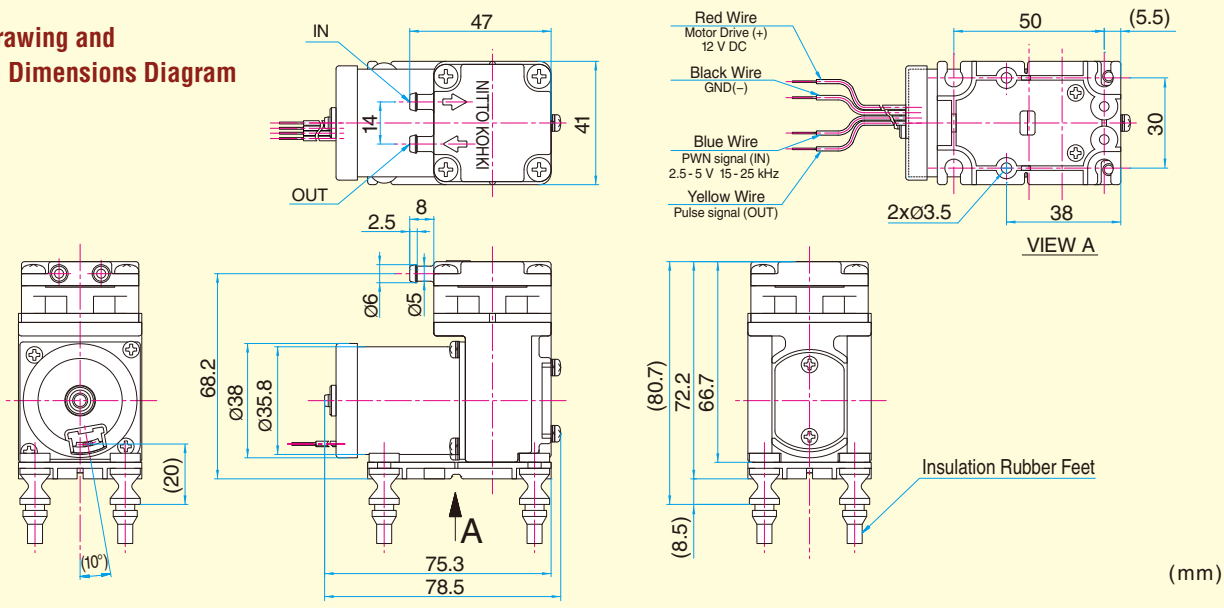


Performance Curve

*The values of performance curves are for reference only.



Sketch Drawing and Mounting Dimensions Diagram



Mounting Dimension of Rubber Foot: Plate thickness : t=2mm, Hole diameter : $\phi 6 \pm 0.1$ mm (Rubber feet come with the product as accessories.)

★ Specifications and designs are subject to change at any time without notice.



Head Office
9-4, Nakaikagami 2-chome,
Ohta-ku, Tokyo 146-8555 Japan
Phone : +81-3-3755-1111 Fax : +81-3-3753-8791

- ▶ E-mail : overseas@nitto-kohki.co.jp
- ▶ URL : www.nitto-kohki.co.jp/e

DISTRIBUTED BY



● For environmental conservation, this print is made of the pulp blended with waste paper and printed with soy-based inks.

Printed in Japan 10F00-①